

TO RENT

APPARTEMENT KIRCHBERG (LUXEMBOURG)

1 900 € - Monthly charges 200,00 €

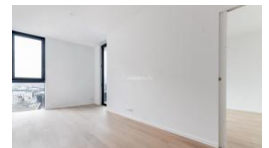
Additional costs : 200.00 €

1 Bedroom(s)

Surface : 52.50 m2

Reference : 5797

Stage : 17



FOR RENT - 1 bedroom apartment in Luxembourg Kirchberg - INFINITY LIVING

Located in the first residential tower in the Grand Duchy of Luxembourg, at the entrance to the Kirchberg, close to the city center and offering breathtaking views, this true architectural gem with pure and elegant lines and 25 floors is signed by the world-renowned architect Bernardo Fort-Brescia of the Arquitectonica agency in collaboration with M3 Architects.

The 1-bedroom apartment on the 17th floor is the promise of high-end services. This 52.5m2 unit judiciously arranged as follows:

- A living room,
- A contemporary kitchen, very bright, open
- A terrace-loggia convertible into a winter garden of 5 m2
- Exceptional ceiling height 2.90 m
- Large triple-glazed bay windows, aluminum frame,
- A bedroom with custom closet,
- An Italian-style shower room with top-of-the-range sanitary equipment,
- A guest toilet,
- A laundry room in the apartment,



unicorn
Agence de Luxembourg
18, rue du Marché-aux-Herbes
L-1728 Luxembourg
+352 26 54 17 17

unicorn
Agence d'Esch-sur-Alzette
25, avenue de la Gare
L-4131 Esch-sur-Alzette
+352 26 54 17 17

TO RENT

APARTMENT KIRCHBERG (LUXEMBOURG)

1 900 € - Monthly charges 200,00 €

A cellar completes this exceptional property.

In the heart of the business district and a stone's throw from the Philharmonie, the Mudam and the Grand Théâtre, this tower is part of an ideal urban setting. The project combines the three entities: LIVING, SHOPPING and WORKING, without forgetting the presence of the Tram in order to facilitate your trips to the city center.

Available on April 1st 2021

Rental conditions :

- Deposit : 3 months rent
- Month of rent payable in advance
- Agency commission of one month's rent + VAT 17 %.

For any information, please contact our agency at +352 26 54 17 17.



unicorn
Agence de Luxembourg
18, rue du Marché-aux-Herbes
L-1728 Luxembourg
+352 26 54 17 17

unicorn
Agence d'Esch-sur-Alzette
25, avenue de la Gare
L-4131 Esch-sur-Alzette
+352 26 54 17 17