

# APARTMENT WALFERDANGE

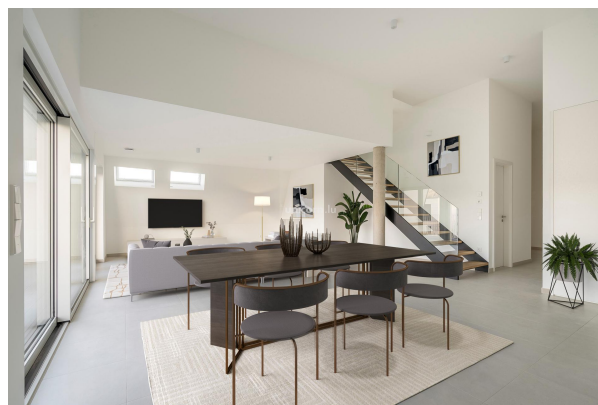
REF. 8538

1 425 000 €

5 bedrooms

157.69m<sup>2</sup> Surface (m<sup>2</sup>)

Energetic Index A



Less than 7 km north of Luxembourg City, in the charming commune of Walferdange, prized for its quality of life and authentic character, your Unicorn real estate agency is offering for sale a new duplex in the Vetta residence.

Located on the second floor of the residence, on the garden side, this 157 m<sup>2</sup> property has plenty to offer.

As you enter this beautifully finished apartment, you'll find a charming entrance hall giving access to the 52 m<sup>2</sup> living space with its high ceilings, as well as to the night hall.

Illuminated by an 18m<sup>2</sup> balcony, the living area is entirely open-plan. Living room and dining room open onto the kitchen, ideal for convivial entertaining.

The night hall leads to three bedrooms, one with en-suite bathroom, a shower room and separate toilet.

Two further bedrooms, including the masterbedroom, and a bathroom can be accessed via the stairs on the second floor.

The property also features a cellar, a basement parking space and an outdoor parking space.

For further information, please contact us on 26 54 17 17.

<https://www.unicorn.lu/en/detail-8538-vente-appartement-walferdange>



18, rue du Marché-aux-Herbes  
L-1728 Luxembourg  
Grand Duché du Luxembourg

T. +352 26 54 17 17  
T. +352 26 53 25 36

info@unicorn.lu  
www.unicorn.lu