

APARTMENT WALFERDANGE

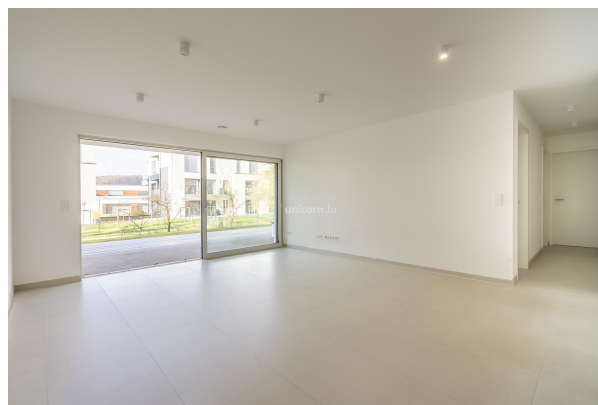
REF. 8537

875 000 €

2 bedrooms

83.18m² Surface (m²)

Energetic Index A



Less than 7 km north of Luxembourg-City, in the charming commune of Walferdange, prized for its quality of life and authentic character, your Unicorn real estate agency offers a new apartment for sale in the Vetta residence.

Located on the garden level, this 83.18m² property has plenty to offer.

As you enter this beautifully finished apartment, you'll discover an entrance hall leading to a separate toilet, a storage room and a charming living area. The open-plan living area comprises a living room and dining room, opening onto a 40m² terrace and large private garden.

The night space comprises two bedrooms of +/- 13m² and a shower room, all accessed via a night hall.

There's also a cellar and basement parking space.

For more information, or to arrange a viewing, please contact us on +352 26 54 17 17.

<https://www.unicorn.lu/en/detail-8537-vente-appartement-walferdange>



18, rue du Marché-aux-Herbes
L-1728 Luxembourg
Grand Duché du Luxembourg

T. +352 26 54 17 17
T. +352 26 53 25 36

info@unicorn.lu
www.unicorn.lu